

THIS DRAWING IS A CONTROLLED DOCUMENT.

PART NUMBER	REV	FIRST USED	TERMINATOR	FEED TYPE	DESCRIPTION
1339747-1	B		- BENCH & LEADMAKER	MECH POST FEED	HD-I APPLICATOR
7-1339747-1	B		- BENCH & LEADMAKER	MECH POST FEED	-1 AND SPARE PARTS
7-1339747-7	A		-	-	SPARE PARTS KIT

CRIMP DATA PRONER TERMINAL PRONER CRIMP SPECS

TERMINAL NAME: 2.8MM CLIP

CRIMP	SIZE	TYPE	RANGE
WIRE	1.78 [.070 IN]	F	0.22mm ² - 1.00mm ²
INSUL	2.54 [.100 IN]	F	1.40-2.60 [.055-.102 IN]

WIRE STRIP LENGTH 3.80-4.80 [.150-.189 IN] APPL INSTRUCTION 408-8323

TERMINAL APPL SPEC PRONER DRG. 50611 REV B1 FEED 17.80 [.701 IN]

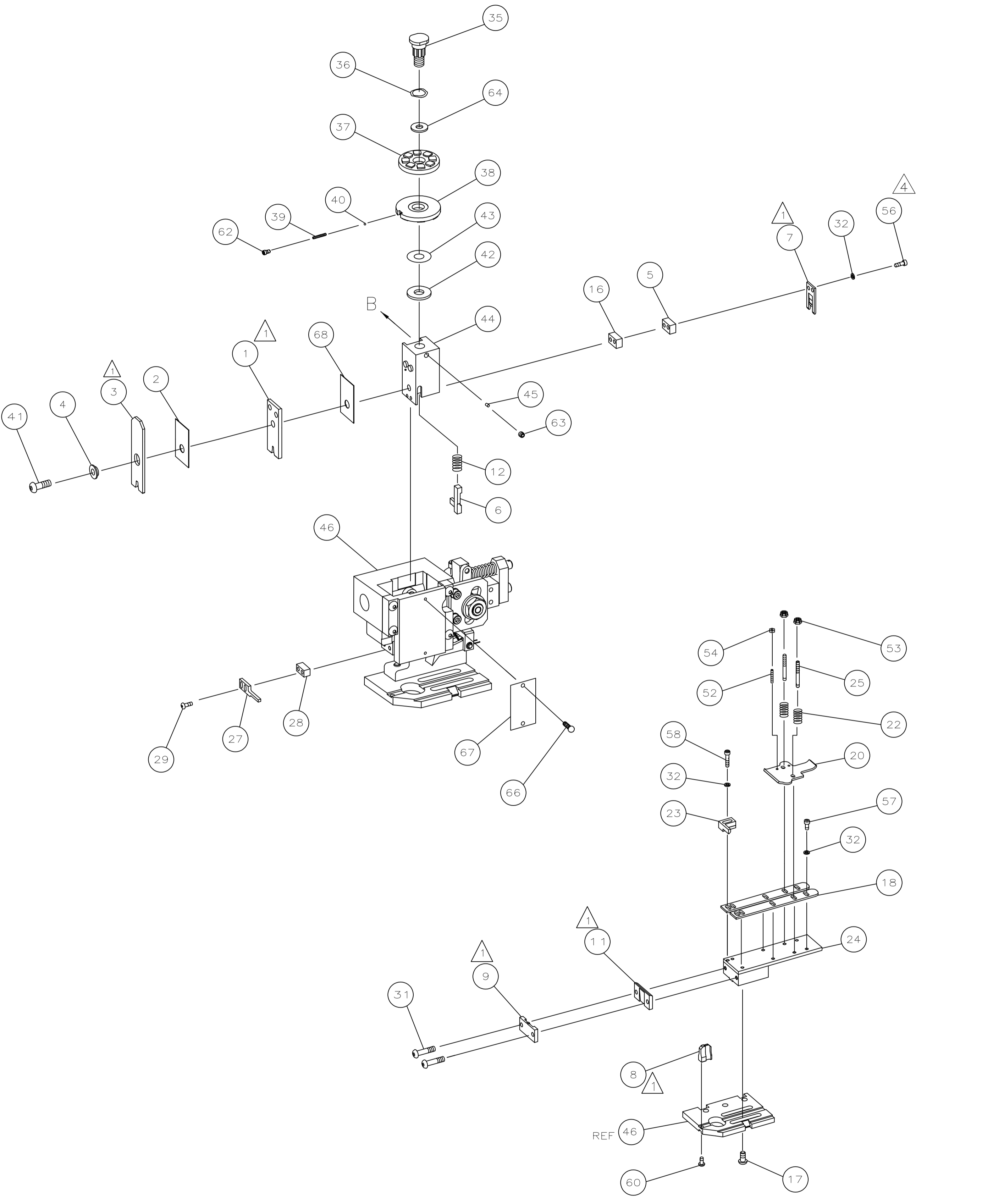
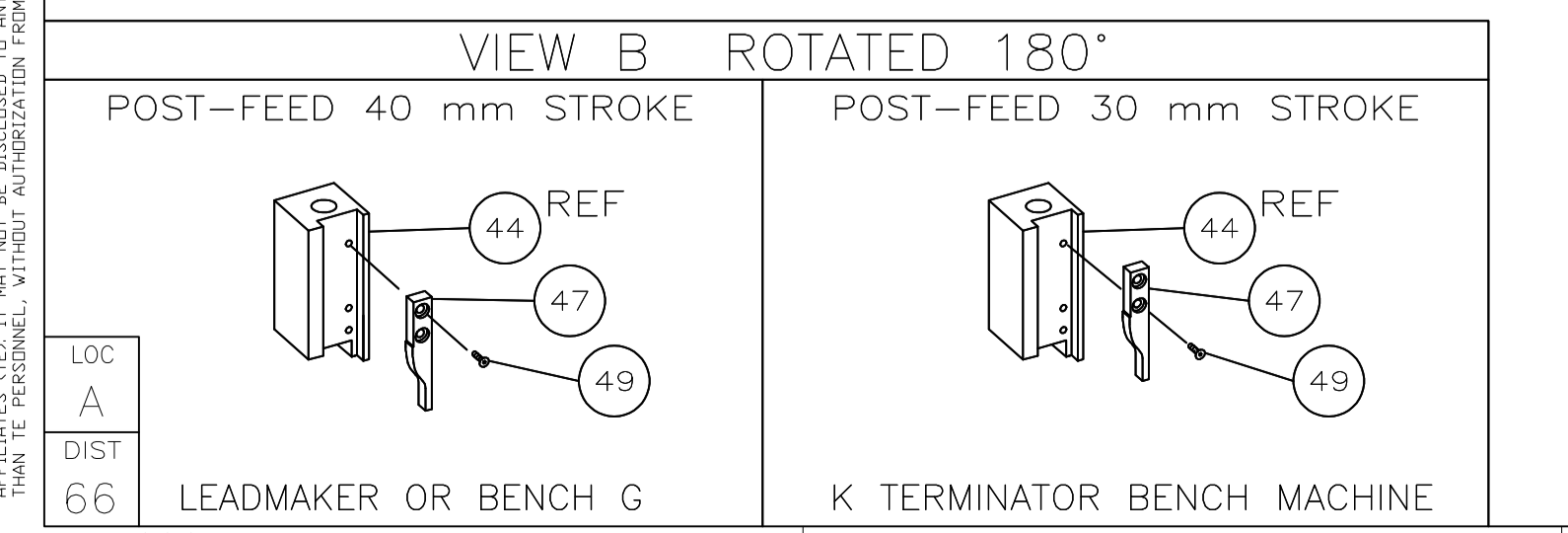
TERMINALS APPLIED

AMP PN	-	-	-	-
1544513	-	-	-	-
-	-	-	-	-
-	-	-	-	-
-	-	-	-	-
-	-	-	-	-
-	-	-	-	-
-	-	-	-	-
-	-	-	-	-

WIRE SIZE mm ² AWG	CRIMP HEIGHT	PIN PN AND LENGTH [IN]
1.00mm ²	1.28 ±0.05 [.050 ±0.002 IN]	3-354779-0 [.3140]
0.75mm ²	1.18 ±0.03 [.046 ±0.001 IN]	3-354779-8 [.3180]
0.50mm ²	1.07 ±0.03 [.042 ±0.001 IN]	4-354779-6 [.3220]
0.38mm ²	1.02 ±0.03 [.040 ±0.001 IN]	4-354779-9 [.3235]
0.22mm ²	0.94 ±0.03 [.037 ±0.001 IN]	5-354779-4 [.3260]
-	-	-
-	-	-
-	-	-
-	-	-
-	-	-
-	-	-
-	-	-
-	-	-
-	-	-

SET UP GAGE 458638-3 LAYOUT L1339747

- ⚠️ RECOMMENDED SPARE PARTS.
- 2. GREASE RAM, CAM, CAM FOLLOWER AND FEED ROD LIGHTLY.
- 3. LUBRICATE DAILY PER THE APPLICATOR INSTRUCTION SHEET SUPPLIED WITH THE APPLICATOR.
- ⚠️ CUT TO LENGTH AT ASSEMBLY.



QTY	REQD	PER ASSY	PART NO	DESCRIPTION	ITEM NO	
-	1	1	-	1339747	PRINT, APPLICATOR LOG SHEET	72
-	1	1	-	1338705-2	DOCUMENTATION PACKAGE	71
					70	
					69	
-	1	1	-	455888-1	SPACER, CRIMPER	68
-	1	1	-	461264-1	PLATE, IDENTIFICATION	67
-	2	2	-	21017-2	SCR,DRIVE(#2X.19)ID PLATE	66
					65	
-	1	1	-	986950-1	WASHER, FLAT PRECISION	64
-	1	1	-	3-18031-0	SCR,SKT SET(M6X6)RAM	63
-	1	1	-	18023-9	SCR,SKT CAP(M4X6)CP DSC	62
					61	
-	1	1	-	18024-7	SCR,BHC(M4X10)ANVIL	60
					59	
-	2	2	-	1-18023-3	SCR,SHC(M4X16)HOLD DOWN	58
-	5	5	-	1-18023-0	SCR,SHC(M4X8)STRIP GUIDE	57
-	2	2	-	1-18023-2	SCR,SHC(M4X12)SLUG BLADE	56
					55	
-	2	2	-	18029-1	NUT,HEX(M3)DRAG	54
-	2	2	-	986965-1	NUT,HEX SL(M4)DRAG STUD	53
-	2	2	-	2-18032-2	SCR,SKT SET(M3X10)DRAG	52
					51	
					50	
-	1	1	-	18024-3	SCR,BHC(M3X10)CAM	49
					48	
-	1	1	-	1338676-1	CAM, POST-FEED 30 & 40 mm ST	47
-	1	1	-	1338662-1	APPLICATOR, BASIC (SUBASSY)	46
-	1	1	-	690191-1	PLUG, NYLON	45
-	1	1	-	1320998-1	RAM	44
-	1	1	-	690125-1	WASHER, LAMINATED	43
-	1	1	-	690124-1	WASHER, RAM	42
-	1	1	-	2-18024-6	SCREW,BHC(M8X25)CRIMPER	41
-	1	1	-	23241-1	BALL, STEEL	40
-	1	1	-	2-22278-7	SPRING, COMPRESSION	39
-	1	1	-	1320922-1	DISC, INSULATION	38
-	1	1	-	354777-1	WIRE DISC, PLASTIC	37
-	1	1	-	22480-5	WASHER, SPRING	36
-	1	1	-	690212-1	POST, RAM	35
					34	
					33	
-	9	9	-	18025-2	WASHER,LOCK(M4)SHEAR BL	32
-	2	2	-	1-18024-0	SCR,BHC(M4X20)SHEAR PL	31
					30	
-	2	2	-	18024-8	SCR,BHC(M4X12)STRIPPER	29
-	1	1	-	3-690451-2	SPACER, STRIPPER	28
-	1	1	-	240639-1	STRIPPER	27
					26	
-	2	2	-	1320906-1	DRAG, STUD	25
-	1	1	-	1-1320995-2	PLATE, STRIP GUIDE	24
-	1	1	-	240825-4	PLATE, STRIP HOLD DOWN	23
-	2	2	-	4-22281-1	SPRING, DRAG	22
					21	
-	1	1	-	1338665-1	DRAG, STOCK	20
					19	
-	2	2	-	1338663-4	GUIDE, LOWER STRIP	18
-	4	4	-	1-18024-8	SCR,BHC(M6X12)STRIP GD PL	17
-	1	1	-	1338708-1	SPACER, SLUG BLADE	16
					15	
					14	
					13	
-	1	1	-	23846-1	SPRING, HOLD DOWN	12
-	1	1	-	240644-3	PLATE, REAR SHEAR	11
					10	
-	1	1	-	690482-5	PLATE, FRONT SHEAR	9
1	2	1	-	2-1333215-3	ANVIL	8
-	1	1	-	690474-5	BLADE, SLUG	7
-	1	1	-	2-455892-8	HOLD DOWN, TERMINAL	6
-	1	1	-	6-240641-7	SPACER, SLUG BLADE	5
-	1	1	-	238009-1	SPACER, BLOCK CRIMPER	4
1	2	1	-	2-456134-0	CRIMPER, INSULATION	3
-	1	1	-	455888-3	SPACER, CRIMPER	2
1	2	1	-	456418-1	CRIMPER, WIRE	1

SCALE: 1 A1 SIZE: 1339747 SHEET: 1 of 1 REV: B

DATE: 5-2011 DWN: MY APVD: GB

TE Connectivity

END FEED HD-I APPLICATOR

REVISION RECORD