

| LOC | DIST | REVISIONS                 |           |     |      |
|-----|------|---------------------------|-----------|-----|------|
| P   | LTR  | DESCRIPTION               | DATE      | DWN | APVD |
|     | A    | REVISED PER ECR-14-007825 | 30MAY2014 | RS  | EC   |
|     | B    | ECO-15-015144: ADD UL.    | 23OCT2015 | EC  | EC   |
|     |      |                           |           |     |      |

**SAFETY ORGANIZATIONS**

THIS FILTER HAS BEEN FORMALLY RECOGNIZED, CERTIFIED OR APPROVED BY THE LISTED AGENCY. THEREFORE, ALL TEST/REQUIREMENTS SPECIFIED IN THE LATEST REVISION OF THE FOLLOWING AGENCY STANDARDS HAVE BEEN MET: UL

**OPERATING SPECIFICATIONS**

LINE CURRENT/VOLTAGE: 250 A, 520 VAC  
 LINE FREQUENCY: 50-60 Hz  
 NOMINAL LEAKAGE CURRENT: 6 mA  
 MAXIMUM LEAKAGE CURRENT: 222mA @ 277V, 50HZ  
 OPERATING AMBIENT TEMPERATURE RANGE @ RATED CURRENT, I : -10°C TO +50°C

IN AN AMBIENT, T, HIGHER THAN 50°C, THE MAXIMUM OPERATING CURRENT, I, IS AS FOLLOWS:

$$I_{c10} = I_r \sqrt{\frac{100-T}{50}}$$

**RELIABILITY SPECIFICATIONS**

STORAGE TEMPERATURE: -40°C TO +85°C  
 HUMIDITY: 21 DAYS @ 40°C AND 95% RH

**TEST SPECIFICATIONS**

INDUCTANCE, NOMINAL: 64.1 μH  
 CAPACITANCE @ 1 kHz, 0.25 VAC MAX., 25°C ±1°C:  
 LINE TO GROUND, NOMINAL: 2.62 μF  
 LINE TO LINE, NOMINAL: 12.3 μF  
 DISCHARGE RESISTOR L/G AND L/L I.R. 666kΩ / 666kΩ  
 IR (NO DISCHARGE RESISTOR) 20°C, 50% RH AND 100VDC, MIN: 6000 MΩ

**RECOMMENDED RECEIVING INSPECTION HIPOT**

LINE TO GROUND FOR 1 MINUTE: 2200 VDC  
 LINE TO LINE FOR 1 MINUTE: 2160 VDC

**FILTER APPROVAL:**

THE BEST WAY TO SELECT AND QUALIFY A FILTER IS FOR YOUR ENGINEERING TO TEST THE UNIT IN YOUR EQUIPMENT.

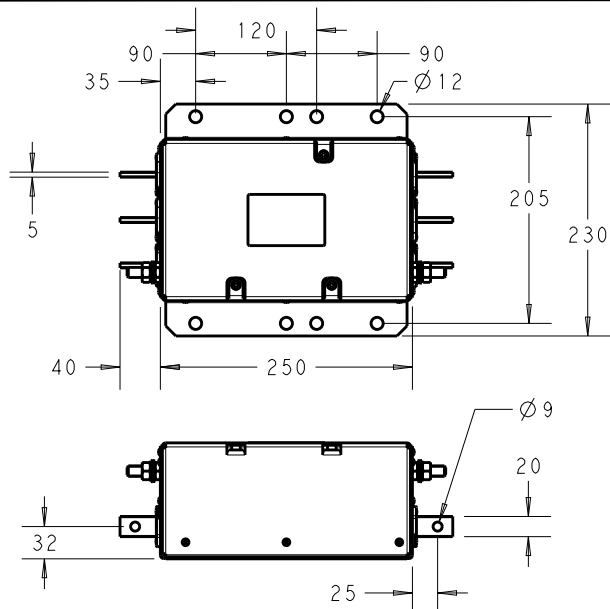
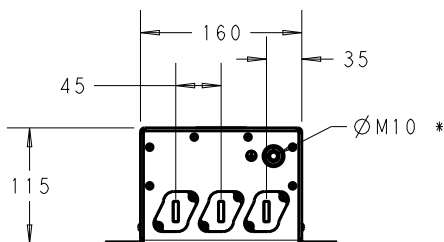
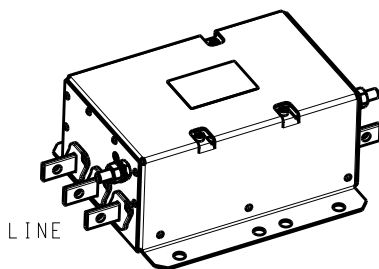
RELEASED FOR PUBLICATION

ALL RIGHTS RESERVED.

THIS DRAWING IS UNPUBLISHED.

BY -

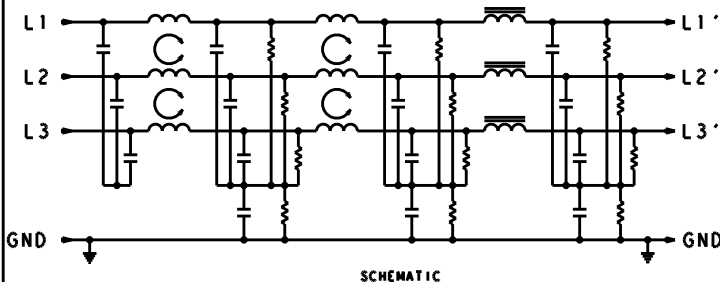
© COPYRIGHT -



\* DO NOT LOOSEN INNER GROUND NUTS. TORQUE OUTER GROUND NUTS TO: 12-14 NM [110-120 IN-LB]

TYPICAL INSERTION LOSS  
 COMMON MODE 50/50 Ω; DIFFERENTIAL MODE 100/100Ω

| MHz | 0.01 | 0.05 | 0.15 | 0.5 | 1.0 | 3.0 | 5.0 | 10 | 30 |
|-----|------|------|------|-----|-----|-----|-----|----|----|
| CM  | 12   | 23   | 66   | 77  | 63  | 79  | 80  | 53 | 29 |
| DM  | 31   | 45   | 64   | 81  | 69  | 57  | 51  | 44 | 31 |



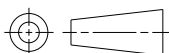
SCHMATIC

DIMENSIONS:

mm

TOLERANCES UNLESS OTHERWISE SPECIFIED:

|        |         |
|--------|---------|
| 0 PLC  | ±2.0    |
| 1 PLC  | ±1      |
| 2 PLC  | ±0.5    |
| 3 PLC  | ±0.2    |
| 4 PLC  | ±0.0001 |
| ANGLES | ±       |



DWN 16DEC2013

RS -

CHK 16DEC2013

EC -

APVD 16DEC2013

EC -

PRODUCT SPEC

8-1609148-2

APPLICATION SPEC

-

WEIGHT 6.4 kg

Customer Drawing

MATERIAL

-

FINISH

-



TE Connectivity

NAME

250APH12L  
 3-PHASE DELTA FILTER

SIZE

A4

CAGE CODE

000779

DRAWING NO

C-8-1609148-2

RESTRICTED TO

-

SCALE 2:15

SHEET 1 OF 1

REV B