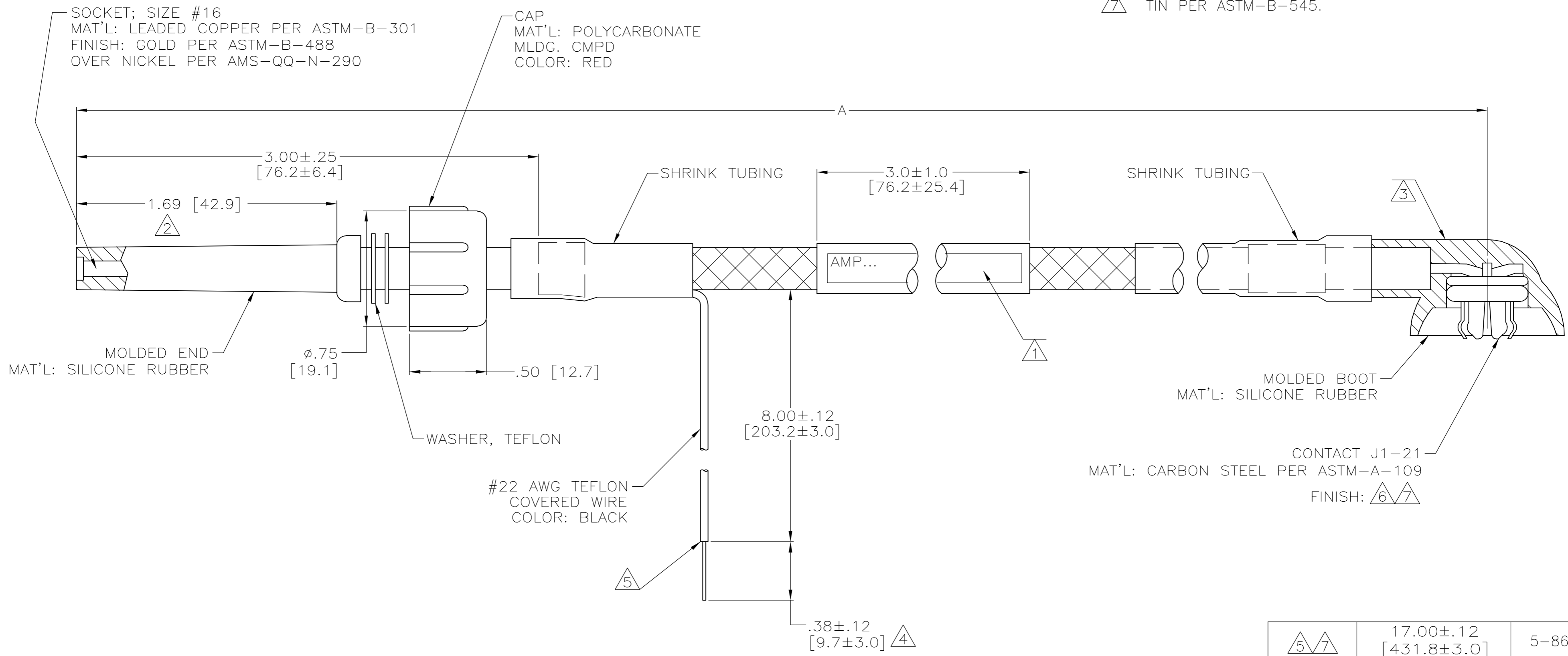


THIS DRAWING IS UNPUBLISHED. RELEASED FOR PUBLICATION - N/A .
 © COPYRIGHT N/A BY TYCO ELECTRONICS CORPORATION. ALL RIGHTS RESERVED.

LOC	DIST	REVISIONS					
DF	S0	P	LTR	DESCRIPTION	DATE	DWN	APVD
		F		REV PER ECO-05-005459	08-05	AA	DE

- ① MARKED PER MIL-STD-130.
- ② TO MATE WITH ANY AMP LGH-1L RECEPTACLE WITH A 1.69 [43.0] BARREL DEPTH.
- ③ TO MATE WITH J1-21 C.R. TUBE CAP.
- ④ PIGTAIL IS SOLDER DIPPED. (861084-1 & -2 ONLY)
- ⑤ INSULATION CUT, BUT NOT REMOVED. (5-861084-2 ONLY)
- ⑥ TIN-LEAD 93/7 OR TIN PER ASTM-B-545.
- ⑦ TIN PER ASTM-B-545.



⑤⑦	17.00±.12 [431.8±3.0]	5-861084-2
④⑥	17.00±.12 [431.8±3.0]	861084-2
④⑥	12.00±.12 [304.8±3.0]	861084-1
REMARKS	DIM A	PART NO.

THIS DRAWING IS A CONTROLLED DOCUMENT.		DWN	C.C.THOMAS	12-AUG-92	 Tyco Electronics Corporation Harrisburg, Pa 17105-3608
DIMENSIONS: INCHES [mm]		CHK	S.GLATFELTER	25-AUG-92	
TOLERANCES UNLESS OTHERWISE SPECIFIED:		APVD	S.GLATFELTER	25-AUG-92	
0 PLC ± - 1 PLC ± - 2 PLC ± .03 [0.8] 3 PLC ± .015 [0.38] 4 PLC ± - ANGLES ± -		NAME	LEAD ASSY SGL END WITH J1-21 BOOT LGH-1L		
MATERIAL	SEE CALLOUTS	FINISH	SEE CALLOUTS	WEIGHT	-
CUSTOMER DRAWING		SCALE	2:1	SHEET	1 OF 1
		SIZE	A2	CAGE CODE	00779
		DRAWING NO	C=861084		RESTRICTED TO
		REV	F		