

ST-OV2-110DC/ 60DC/1


Order No.: 2905051

The illustration shows version ST-OV 2- 5 DC/ 60 DC/1

<http://eshop.phoenixcontact.de/phoenix/treeViewClick.do?UID=2905051>

Pluggable power optocoupler, with light indicator and protection circuits in the input and output circuits, input: 110 V DC, output: 12-60 V DC/max. 1 A, can be plugged on basic termination blocks

Commercial data

| | |
|--------------------------|--------------------------------------------------------------------------------------------------------|
| GTIN (EAN) |  4 017918 079192 |
| sales group | G101 |
| Pack | 10 pcs. |
| Customs tariff | 85364900 |
| Catalog page information | Page 90 (IF-2005) |

Product notes

WEEE/RoHS-compliant since:
06/07/2007

<http://www.download.phoenixcontact.com>
Please note that the data given here has been taken from the online catalog. For comprehensive information and data, please refer to the user documentation. The General Terms and Conditions of Use apply to Internet downloads.

Technical data

Input data

| | |
|------------------------------------------------------|----------------------------------------------------------|
| Nominal input voltage U_N | 110 V DC ± 20 % |
| Switching threshold "0" signal in reference to U_N | ≤ 0.4 |
| Switching threshold "1" signal in reference to U_N | ≥ 0.8 |
| Typical input current at U_N | 6 mA |
| Typical response time | 20 μ s |
| Typical turn-off time | 200 μ s |
| Status display | Yellow LED |
| Type of protection | Protection against polarity reversal Surge protection |
| Protective circuit/component | Polarity protection diode |
| Transmission frequency | 500 Hz |

Output data

| | |
|--------------------------------------------------|----------------------------------------------------------|
| Output nominal voltage range | 12 V DC ... 60 V DC |
| Limiting continuous current | 1 A (see derating curve) |
| Surge current | 5 A (t = 1 s) |
| Peak offstate voltage | 60 V DC (Collector-emitter reverse voltage) |
| Voltage drop at max. limiting continuous current | 1.2 V |
| Output circuit | 2-wire, floating |
| Type of protection | Protection against polarity reversal Surge protection |
| Protective circuit/component | Polarity protection diode |

General data

| | |
|-----------------------------------------|-----------------------------------------------------------------------|
| Width | 14.6 mm |
| Height | 33 mm |
| Depth | 66.5 mm |
| Test voltage input/output | 2.5 kV AC |
| Ambient temperature (operation) | -20 °C ... 60 °C |
| Ambient temperature (storage/transport) | -20 °C ... 70 °C |
| Mounting position | Any |
| Standards/regulations | DIN VDE 0110b, Gr. C for 250 V DC DIN VDE 0160 (in relevant parts) |

Certificates / Approvals

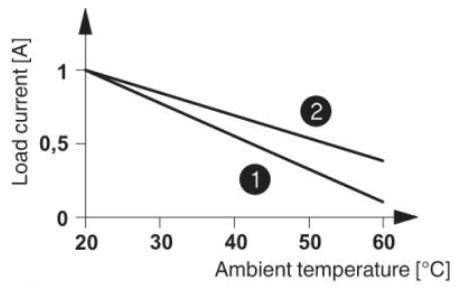


Certification

GOST

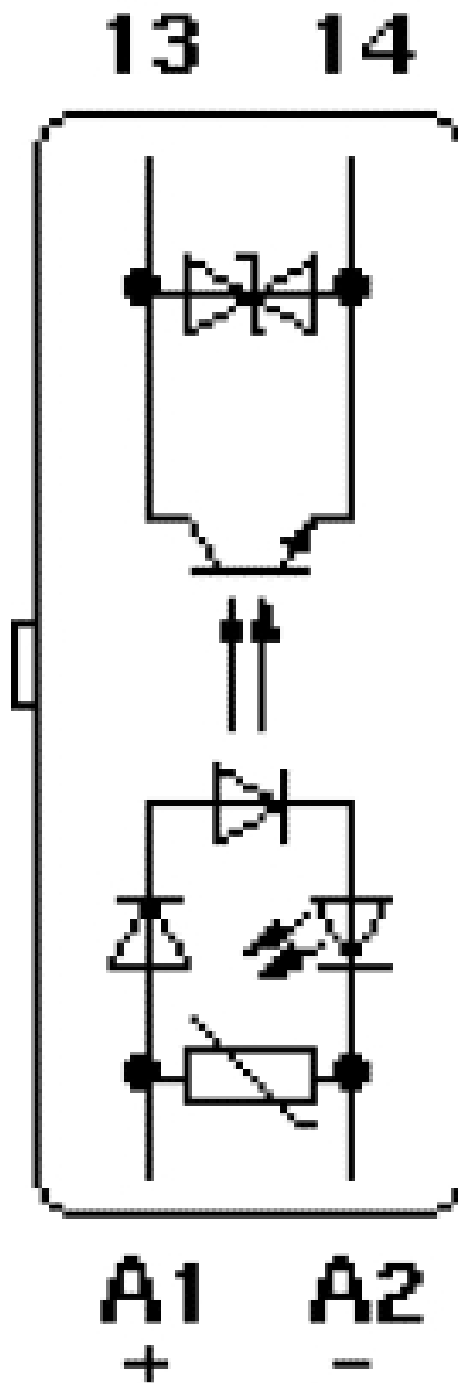
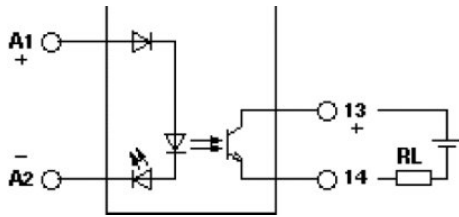
Diagrams/Drawings

Diagram



- ① In rows with zero spacing
- ② stand-alone device

Circuit diagram



Address

PHOENIX CONTACT Deutschland GmbH
Flachmarktstr. 8
32825 Blomberg, Germany
Phone +49 5235 3 12000
Fax +49 5235 3 41200
<http://www.phoenixcontact.de>



© 2011 Phoenix Contact
Technical modifications reserved;