

NEW! EVP-AE, EVP-AF and EVP-AJ Series

Light Touch and Detector Switches

Six New and Expanded Electromechanical Series

Panasonic, a worldwide leader in Electromechanical Products, is pleased to introduce new and expanded Light Touch and Detector Switch Series to our already outstanding Electromechanical product line. Target markets include Portable Electronics, Telecommunication, Medical Devices and Mobile Phones. RoHS compliant.

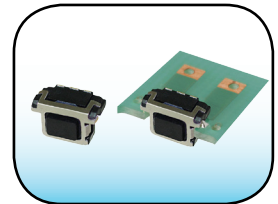
EVP-AE 4.5 x 2.2mm Side-Operational Switch

Line Ext.

Unique, Ultra-Durable Edge-Mounting Design

Improved soldering strength in push direction!

- Long Operational Life - 200,000 Cycles
- Height from PCB - 0.95mm
- ESD Protected
- Now with 20% Improved Peel Off Strength



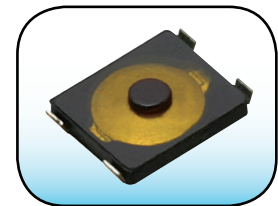
EVP-AF 3.0 x 2.6mm Light Touch Switch

Line Ext.

Ultra-Miniaturized, Ultra-Thin Design!

Small form factor allows more PCB real estate and slimmer application profile.

- Paper Thin Height - 0.65mm
- Equipped with Actuator for Assuring Click Feel
- Now with More Push Force Options - 1.6N and 2.4N Added to the Existing 3.4N
- ESD Protection Option Available



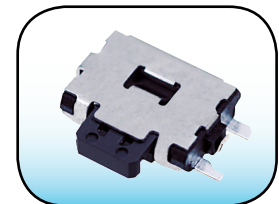
EVP-AJ Double-Action Side Operational Switch

Line Ext.

Durable, Super-Slim Design!

High mounting strength of 80N for impact resistance.

- Slim Body Profile - 1.7mm
- Double Action with Two Actuation Steps
- Now Available with Straight Terminals
- ESD Protected



For detailed specification information on these new and expanded Light Touch and Detector Switches visit:

- panasonic.com/industrial/components/pdf/EVP-AE_DataSheet.pdf
- panasonic.com/industrial/components/pdf/EVP-AF_DataSheet.pdf
- panasonic.com/industrial/components/pdf/EVP-AJ_DataSheet.pdf

Website: panasonic.com/industrial/electronic-components/electromechanical/index.aspx

Panasonic ideas for life